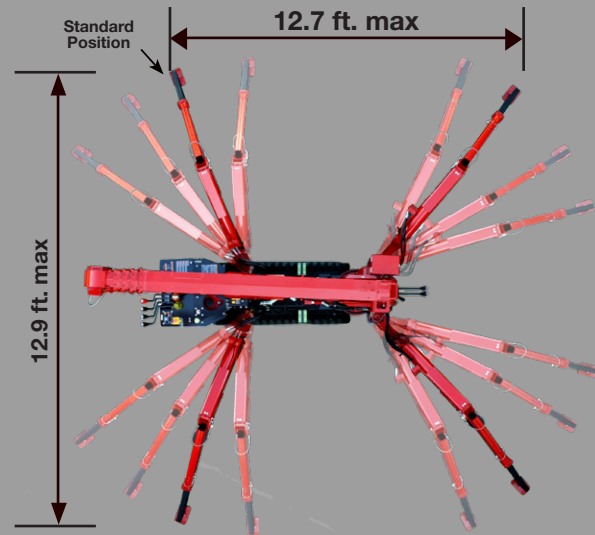




- Only 24" wide
- Full-function wireless radio remote controls
- Centrally located infinite variable controls - Automatic throttle
- Onboard self-diagnostic computer system
- Anti-two block system
- Hexagonal boom design with 31 ft. tip height (37 ft with jib)
- Automatic hook stow system
- UNIC patented outrigger overturn monitoring system to allow 52 outrigger configurations.
- 360 Degree continuous rotation

## 52 OUTRIGGER POSITIONS



OUTRIGGERS MINIMUM    OUTRIGGERS MAXIMUM

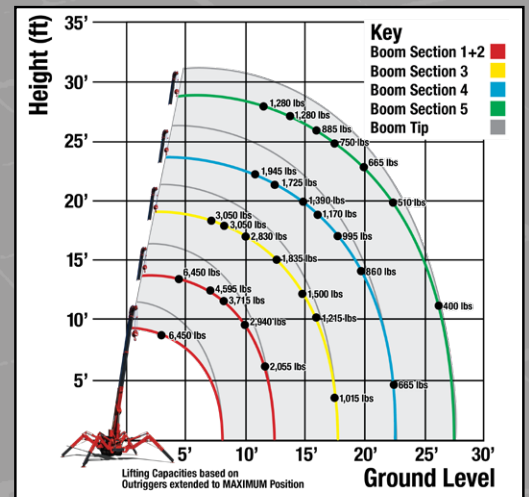


## LOAD CHART

Lifting capacity varies depending on outrigger configuration and boom length and angle.

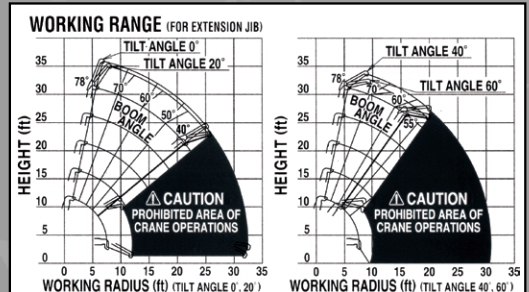
BOOM SECTION 1 EXTENDED   BOOM SECTION 1 + 2 EXTENDED									
Working Radius (ft.)	3	4.5	5	6	7	8	10	11	12.58
Outriggers Maximum (lbs.)	6,450	6,450	5,850	4,950	4,350	3,800	2,850	2,450	2,000
Outriggers Minimum (lbs.)	4,450	4,450	4,450	3,150	2,250	1,600	1,100	950	600
BOOM SECTION 1 + 2 + 3 EXTENDED									
Working Radius (ft.)	7	8	9	10	11	12	14	15	17.62
Outriggers Maximum (lbs.)	3,050	3,050	3,050	2,750	2,450	2,150	1,650	1,450	1,000
Outriggers Minimum (lbs.)	1,850	1,550	1,250	1,150	1,000	850	600	550	300
BOOM SECTION 1 + 2 + 3 + 4 EXTENDED									
Working Radius (ft.)	11	12.5	13	15	16	17	18	20	22.61
Outriggers Maximum (lbs.)	1,950	1,950	1,750	1,350	1,200	1,100	1,000	850	660
Outriggers Minimum (lbs.)	1,000	800	750	600	510	450	370	280	200
BOOM SECTION 1 + 2 + 3 + 4 + 5 EXTENDED									
Working Radius (ft.)	12.5	13.5	15	16	18	19	21	23	27.59
Outriggers Maximum (lbs.)	1,280	1,280	1,050	920	750	700	590	500	440
Outriggers Minimum (lbs.)	850	700	600	530	420	380	300	220	130

## WORKING RADIUS



## Rated Load for Extension Jib in lbs.

1st TO 4th BOOM SECTIONS												
Boom Angle	78°	75°	70°	65°	60°	55°	50°	40°	30°	20°	10°	0°
Tilt Angle 0°	1,580	1,580	1,580	1,140	810	590	590	<b>PROHIBITED AREA OF CRANE OPERATIONS</b>				
20°	1,580	1,580	1,580	1,140	810	590	590					
40°	1,580	1,580	1,580	1,140	810							
60°	1,580	1,580	1,580	1,140	810							
5th BOOM SECTION ONLY												
Boom Angle	78°	75°	70°	65°	60°	55°	50°	40°	30°	20°	10°	0°
Tilt Angle 0°	920	920	920	590	480	370	260	<b>PROHIBITED AREA OF CRANE OPERATIONS</b>				
20°	920	920	920	590	480	370	260					
40°	920	920	920	590	480							
60°	920	920	920	590	480							






## Rated Load for Searcher Hook in lbs.

1st TO 4th BOOM SECTIONS											
Working Radius (ft.)	12.5	13	15	16	18	20	21	23	26	27.5	
Outriggers Maximum (lbs.)	1,560	1,560	1,060	940	740	570	520	410	310	240	
Outriggers Minimum (lbs.)	560	460	330	280	190	120	110	<b>PROHIBITED AREA OF CRANE OPERATIONS</b>			
5th BOOM SECTION ONLY											
Working Radius (ft.)	12.5	13	15	16	18	20	21	23	26	30	32.5
Outriggers Maximum (lbs.)	1,120	1,010	870	740	670	570	510	410	310	220	130
Outriggers Minimum (lbs.)	560	460	330	280	190	120	110	<b>PROHIBITED AREA OF CRANE OPERATIONS</b>			

1 Part line - 1,630 lbs | 2 Part line - 3,260 lbs | 3 Part line - 4,890 lbs | 4 Part line - 6,450 lbs

# SPECIFICATIONS

	URW295CP1URS & URW295CP1URS/P	URW295CP1UMRS & URW295CP1UMRS/P	URW295CUBRS	URW295C4URS	URW295C4UMRS
<b>Engine / Motor</b>				<b>DIESEL</b>	<b>DIESEL Electric</b>
<b>Engine Manufacturer:</b>	Mitsubishi (Gas)	Mitsubishi (Gas)	DC	Kubota	Kubota (Diesel)
<b>Maximum Output:</b>	Gasoline - 13HP Propane - 11.7HP	Gasoline - 13HP Propane - 11.7HP Electric - 5HP/220V (Single Phase)	48V Battery 110V Electric	7.2kw	Diesel- 7.2kw Electric - 5HP/220V (Single Phase)
<b>Tank Capacity:</b>	1.85 gal	1.85 gal		2.7 gal	2.7 gal
<b>Starting Method</b>	Electric and Recoil Start as Standard		N/A	Electric Start	
<b>Crane Capacity</b>	6,450 lbs @4.6ft				
<b>Max Working Radius</b>	1.4 - 28.0 ft				
<b>Tip Height</b>	31 ft (37 ft with Jib)				
<b>Turning Radius</b>	Turns within its dimensions				
<b>Dimensions when Folded (ft.)</b>	2.0 x 4.6 x 9.0 (W x H x L)			2.0 x 4.6 x 9.1 (W x H x L)	2.0 x 4.6 x 9.0 (W x H x L)
<b>Weight</b>	4,200 lbs	4,380 lbs	4,360 lbs	4,245 lbs	4,525 lbs
<b>Outrigger Point Loading</b>	152.2 psi on standard outrigger pads (7" x 4.5") (Specific point landing available upon request)				
<b>Winch Speed</b>	Capacity: 1,630 lbs. at 4th layer   Single-Line				
	131 ft/min at 4th layer	131 ft/min at 4th layer Electric: 89 ft/min at 4th layer	131 ft/min at 4th layer	131 ft/min at 4th layer	131 ft/min at 4th layer Electric: 89 ft/min at 4th layer
<b>Telescopic System</b>	Boom Length: 8.3 ft (retracted) to 28.4 ft (extended) Boom Type: 5-Section hydraulically telescoping boom, with hexagonal box construction				
<b>Telescoping Speed</b>	20 ft / 20 seconds				
<b>Boom Lift Speed</b>	0° - 78° / 11 sec	Gas: 0° - 78° / 11 sec Electric: 0° - 78° / 15 sec	0° - 78° / 15 sec	0° - 78° / 11 sec	Diesel: 0° - 78° / 11 sec Electric: 0° - 78° / 15 sec
<b>Traction System</b>	Travel Speed: 0-1.43 mph				
	Gradability: 20°				
	Track Ground Pressure: 6.96 psi				
<b>Accessories &amp; Options</b>	<ul style="list-style-type: none"> <li>• SPYDERWEB 5-Axis fixed Glass Manipulator - Attaches directly to boom for rigid application</li> <li>• 6 ft offsettable Jib with Searcher Hook and Single-Line Swivel Ball</li> <li>• Custom SPYDERCRANE Trailer - Includes Track Mats, Tool Box, Outrigger Pads and Fuel Containers</li> </ul>		<ul style="list-style-type: none"> <li>• Auxilliary Winch Kit - 2,000 lb Single-Line Pull, 330 ft., 5/16" Wire Rope, 90 FPM</li> <li>• Auxilliary Winch Kit - 3,000 lb Single-Line Pull, 400 ft., 3/8" Wire Rope</li> <li>• MYLAR Non-Marking Tracks</li> <li>• Single-Part Reeving and Two-Part Reeving capability</li> </ul>		